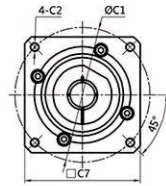
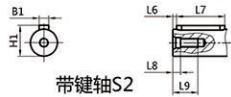
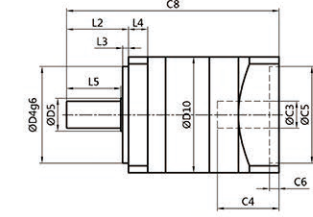




输入端(input)

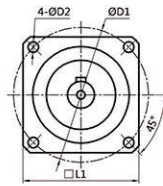


光轴S1
optic axis



带键轴S2
Keyed shaft

输出端(output)



尺寸	WPG042	WPG060	WPG070	WPG080	WPG090	WPG115	WPG130	WPG142	WPG215	
D1	50	70	85	90	100	130	160	185	235	
D2	3.4	5.5	5.5	6.5	6.5	8.5	11	11	13.5	
D3 _{3x}	10	14	16	20	22	25	32	40	55	
D4 _{4x}	26	50	50	70	80	110	120	130	180	
D5	14	17	20	25	25	35	40	60	65	
D6	M5X0.8P	M5X0.8P	M5X0.8P	M6X1P	M6X1.25P	M10X1.5P	M12X1.75P	M12X1.75P	M20X2.5P	
D10	42	60	70	80	90	115	140	162	205	
L1	42	60	75	90	95	120	145	175	215	
L2	26	35	35	40	46	55	75	87	90	
L3	2	3	5	3	5	4	5	5	6	
L4	6	6	7	8	8	10	12	15	20	
L5	23	30	28	36	36	50	70	80	82	
L6	3	2	3	3	3	5	6	6	7.5	
L7	16	25	25	30	30	40	55	65	70	
L8	1	1	1	1	1	3	4	4	4	
L9	10	10	10	12	12	23	30	30	42	
C1*	46	70	70	90	90	145	200	200	200	
C2*	M4X0.7P	M5X0.8P	M5X0.8P	M6X1P	M6X1P	M8X1.25P	M12X1.75P	M12X1.75P	M12X1.75P	
C3*	6≤C3≤8	8≤C3≤14	8≤C3≤14	11≤C3≤22	11≤C3≤22	19≤C3≤24	19≤C3≤24	22≤C3≤42	22≤C3≤42	
C4*	27	32.5	32.5	45.5	45.5	60	82	82	82	
C5*	30	50	50	70	70	110	114.3	114.3	114.3	
C6*	6	5	5	5	5	10	10	10	10	
C7*	42	60	60	80	90	130	180	180	180	
B1	3	5	5	6	6	8	10	12	16	
H1	11.2	16	18	22.5	24.5	28	35	43	59	
C8*	L1	88	110	121.5	153	153	219	203.5	296	242
	L2	98.3	126.5	139.5	178	178	237	273.5	335	349.5

1 Size drawings for small models 28, 35, and 42 are provided separately.
 (1) Means: Allowing radial force and axial force that function in output central place when output speed is 100 rpm.
 (2) The weight of reducer in this book is approximation, the practical is depend on the finished product.
 (3) The moment of inertia relates to the ratio, frame, input shaft and to standard motor shaft, etc.

1 小型號28, 35, 42尺寸圖單獨提供
 (1)表示:在輸出轉速100rpm時,作用於輸出中心位置之徑向力與軸向力。
 (2)減速機重量會因選配電機和機殼材質變化而有所變化,實際重量以實際為準。
 (3)轉動慣量與減速比、減速機內部結構、輸入軸等傳動系統有關,直筒傳動慣量有變化。

参数表

Parameter Table

规格/Specification	段数Stage	数比Ratio	WPG042	WPG60	WPG70	WPG80	WPG90	WPG115	WPG130	WPG142	WPG215
额定输出扭矩 (Nm)	L1	3	4.5	20	22	65	75	120	195	400	1050
		4	15	31	45	75	85	215	600	800	1780
		5	14	39	41	88	100	230	505	700	1600
		7	8	25	-	80	80	160	325	550	1000
		8	-	15	18	50	55	120	210	450	950
		10	5	15	15	50	50	110	160	210	305
		12	18	20	45	75	75	120	195	800	1780
	L2	15	18	20	41	75	75	120	195	700	1600
		16	20	-	45	-	-	-	-	800	1780
		20	20	31	45	85	85	215	600	800	1000
		25	18	39	41	100	100	230	505	700	1780
		30	-	20	41	75	75	120	195	700	1600
		35	18	39	22	100	100	230	505	550	1780
		40	20	31	41	85	85	215	600	700	1600
50	18	39	25	100	100	230	505	450	700		
70	10	25	-	80	80	160	325	-	-		
100	-	15	45	50	50	110	160	800	1780		
最大输出扭矩 (Nm)	L1, L2	2倍额定输出扭矩/2.0 times Rated output torque									
回程标准间隙 (arcmin)	一段	3~10	≤12	≤10	≤10	≤10	≤10	≤10	≤10	≤8	≤8
	二段	12~70	≤15	≤12	≤12	≤12	≤12	≤12	≤12	≤10	≤10
额定输入转速 (rpm)	L1, L2	3~100	3000	4000	4000	4000	4000	3500	3000	3000	4000
最大输入转速 (rpm)	L1, L2	3~100	6000	8000	8000	8000	8000	6000	6000	4500	4000
扭转刚度 (Nm/arcmin)	L1, L2	3~100	-	2.1	-	4.6	5.5	12	30	-	-
容许径向负荷 (N)	L1, L2	4~100	200	320	-	510	550	1600	4500	-	-
容许轴向负荷 (N)	L1, L2	4~100	160	280	-	460	500	1350	2800	-	-
噪音值 (dB)	L1, L2	4~100	≤58	≤61	≤58	≤63	≤63	≤68	≤78	≤70	≤70
使用寿命 (hrs)	L1, L2	4~100	20000								
满载效率/Efficiency (%)	L1	4~10	≥ 97								
	L2	16~100	≥ 94								
使用温度范围 (°C)	L1, L2	16~100	-10° ~ +90°								
防护等级	L1, L2	16~100	IP65								
润滑油	L1, L2	16~100	全合成润滑油 Fully synthetic lubricating grease								
减速机传动惯量 Transmission inertia of reducer											
规格/Specification	段数Stage	数比Ratio	WPG042	WPG60	WPG70	WPG80	WPG90	WPG115	WPG130	WPG142	WPG215
转动惯量 J11nertia (kg. cm)	L1	3	0.31	0.17	0.165	0.63	0.63	3.45	9.58	12.14	251.6
		4	0.22	0.15	0.039	0.55	0.55	2.86	8.65	7.78	243.00
		5	0.019	0.14	0.078	0.49	0.49	2.85	8.44	6.07	232.4
		7	0.017	0.13	-	0.54	0.45	2.85	7.35	-	-
		10	0.015	0.13	0.063	0.44	0.44	2.61	7.11	4.6	-
		12	0.029	0.05	-	0.17	0.17	0.63	3.45	-	-
		15	0.023	0.15	0.039	0.15	0.15	0.55	2.86	7.47	55.3
	L2	20	0.022	0.04	0.049	0.14	0.14	0.49	2.85	6.95	52.10
		25	0.019	0.04	0.039	0.13	0.13	0.45	2.61	5.65	52.10
		30	-	0.04	-	0.13	0.13	0.44	2.61	-	-
		35	0.017	0.04	-	0.13	0.13	0.44	2.61	-	-
		40	0.015	0.04	0.027	0.13	0.13	0.44	2.61	5.81	50.09
		50	0.015	0.04	-	0.13	0.13	0.44	2.61	-	-
		70	0.015	0.03	-	0.13	0.13	0.44	2.61	-	-
100	-	0.03	0.016	0.13	0.13	0.44	2.61	6.10	-		